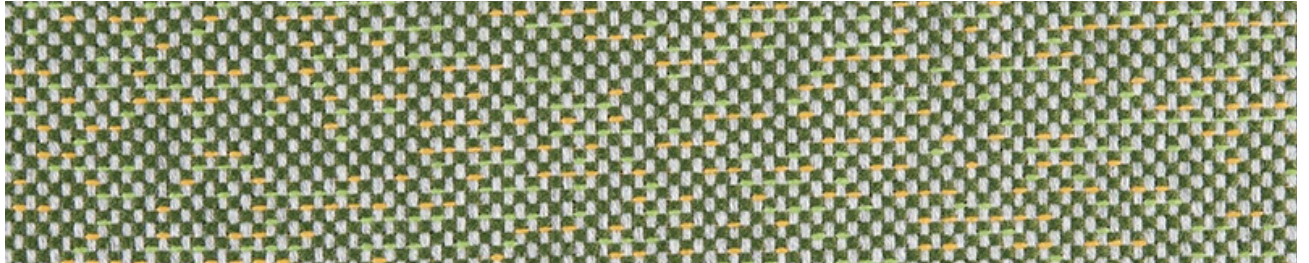


TECHNICAL FABRIC DETAILS

FIJI

Fiji is a triple yarn and color fabric to reflect the character of the fabric. A durable texture with a variety of attractive, warm colors. Uneven but robust in appearance, suitable both on its own and in combination with most of our fabrics, it is ideal for creating environments with personality.



Article specification

| | |
|----------------------|----------------------------|
| Width | 160 cm |
| Horizontal repeat cm | Plain |
| Vertical repeat cm | Plain |
| Composition | 100% SOLUTION DYED ACRYLIC |
| Weight | 435 gr/m ² |
| Thickness (mm) | |

Cleaning Instructions



Use Code

Upholstery
Accessories
Curtains
Outdoor / Indoor
Nautic
Contract

Environmental Standards

FR Standards

Finish

Water repellent

Anti-stain treatment

Optional Fabric Treatment

Waterproof/ Impermeable (Water Column: 1000 mm): Minimum one piece

Extra Softness + Martindale (Higher Resistance): Minimum one piece

Fireproof Treatment (UNE 1021 / IMO / BS5252) : Minimum 500 meters

Warranty: 5 Years

The Agora warranty covers the fabric becoming unserviceable as a result of loss of colour or strength from normal exposure conditions, including sunlight, mildew, rot and atmospheric chemicals, when properly installed, used and maintained. The warranty does not cover labour and installation costs supplied by the dealer. The warranty neither applies against deterioration of any kind due to abusive use, accidental burns, negligence or perforations.

Waterproof and flame retardant treatments: Recommended for cushions and upholstery only. Always use the lamination face inside. Do not expose the coated side to sun or light.

Mechanical Performance

| | |
|---|--|
| Abrasion Test / Martindale Rubs (EN ISO 12947-1,2) | 20.000 |
| Piling Test (EN ISO 12945-2) | 4/5 |
| Colour Fastness to light (ISO 105-B02-2) | 7/8 |
| Colour fastness to dry rub (EN ISO 105-X12) | 4/5 |
| Tearing strength (ISO 13934-1) | Warp: 270 N Weft: 268 N |
| Tensile Strenght (EN ISO 13934-1) | Warp: 2100 N Weft: 2600 N |
| Colour fastness to artificial weathering (ISO 105-B04) | 4/5 |
| Seam slippage (ISO 13936-2) | Warp: 3.0 mm Category C Weft: 3.0 mm Category A |
| Colour fastness to chlorinated water (ISO 105-E03) | 5/5 |
| Ultraviolet protection factor UPF (AZ/NZS 4399/1996) | 50+ |
| Spray test (ISO 24920) | 4/5 |
| Shrinkage to washing (ISO 5077:2007) | Warp: -1.5% Weft: 0% |
| Water column mm (ISO 20811) | 95 |