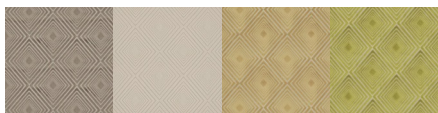


## Design: JURADO



### BASIC INFORMATION

Tariff item number	5801370000	Number of colour ways	4
Country of origin	India	MID	INDDEHOM16
Vertical repeat cm	34.50	Characteristics	Velvet
Horizontal repeat cm	36.00	Vertical repeat inch	13.58
Face in	Yes	Horizontal repeat inch	14.17
Full roll diameter inch	10.24	Full roll diameter cm	26
Minimum for special colour m	1000	Average piece length m	35
		Delivery time weeks special lab dip	4

### CARE AND USAGE

Care code comments iron on reverse side

#### Care codes

Care code for washing °C Do not wash Care code for bleaching Do not bleach



#### Use codes

Curtains  
Upholstery ✓  
Accessories ✓

Curtains and draperies  
Bed covering ✓  
Maritime

Design: JURADO

FABRIC SPECIFICATIONS

Composition	55% Viscose, 45% Polyester	Average yarn number	15.31
Construction	31.88x15.94	Woven	Yes
Useable width cm	1.44	Useable width inch	56.69
Full width cm	146	Full width inch	57.48
Weight g/m <sup>2</sup>	448	Thickness mm	1.440
Colouring type	Yarn dyed	Filament or staple	55% staple + 45% filament
Textured or non textured	55% not textured + 45% textured		

Treatment

---

Bio treatment	Flame retardant
Soil and stain repellent	Brushed/emersed
Backing	Anti-bacterial/microbial
Mildew resistant	Odour resistant
Stain-free technology	PFC free
Other treatment	No treatment ✓

Type of finish

---

Calender	Sanforized
Thermofixed	Washed
Airo ✓	Stenter

Type of print or dye

---

Disperse ✓	Reactive ✓
Vat	Pigment

Weaving type

---

Plain	Twill
Satin	Dobby
Jacquard ✓	Pile
Other	

Design: JURADO

### FABRIC TYPE

There are no technical details for this section.

### ENVIRONMENTAL STANDARDS



Prop 65

Yes

### FR STANDARDS

BS5852 source 0  
FMVSS 302 Pass

Yes  
Yes

CAL 117 Complies  
NFPA 260

Yes  
Yes

Design: JURADO

**MECHANICAL PERFORMANCE**

Martindale rubs	40,000	Colour fastness to light	7
Wyzenbeek double rubs	50,000	Pilling	4
Brush pilling	4	Wyzenbeek wire screen double rubs - residential use, stopped after 15 000 double rubs	15,000
Wyzenbeek cotton duck type heavy upholstery	Yes	Wyzenbeek wire screen heavy duty	Yes
<b>Colour fastness to light - ISO 105-B02</b>			
Colour fastness to light	7		
<b>Colour fastness to water - ISO 105-E01</b>			
Colour fastness to water	4-5		
<b>Colour fastness to dry rub - ISO 105-X12</b>			
Colour fastness dry rub	4-5		
<b>Colour fastness to wet rub - ISO 105-X12</b>			
Colour fastness wet rub	4-5		
<b>Colour fastness to wear - ISO 12947-2</b>			
Colour fastness to wear	4		
<b>Tearing strength - ISO 13937-3</b>			
Tearing strength warp N	80	Tearing strength weft N	120
<b>Tensile strength - ISO 13934-1</b>			
Tensile strength warp N/5cm	2000	Tensile strength weft N/5cm	1200
<b>Elongation - ISO 13934-1</b>			
Elongation warp %	33	Elongation weft %	32
<b>Seam slippage - ISO 13936-2</b>			
Seam slippage warp mm	2	Seam slippage weft mm	2
<b>Dimensional stability (indicated in %) - ISO 3759</b>			
Dimensional change warp	0.00	Dimensional change warp after ironing with steam	-0.27
Dimensional change warp after ironing without steam	0.07	Dimensional change weft	0.00
Dimensional change weft after ironing with steam	0.00	Dimensional change weft after ironing without steam	0.00

Design: JURADO

**WASHABILITY**

**Resistance to domestic washing 30° C, indicated in % - ISO 6330**

Dimensional change warp	-1.26	Dimensional change warp after ironing	-1.26
Dimensional change weft	-0.40	Dimensional change weft after ironing	-0.46
Colour fastness ISO 105 C06	4-5		

**Resistance to domestic washing 60° C, indicated in % - ISO 6330**

Dimensional change warp	-1.16	Dimensional change warp after ironing	-2.05
Dimensional change weft	-0.83	Dimensional change weft after ironing	-0.73
Colour fastness ISO 105 C06	4-5		

**Resistance to dry cleaning P, indicated in % - ISO 105 D01**

Dimensional change warp	-1.16	Dimensional change warp after ironing	-0.46
Dimensional change weft	-0.36	Dimensional change weft after ironing	-0.46
Colour fastness ISO 105 D01	5		

Design: JURADO

**CONSTRUCTION**

**Yarn 1**

Warp Composition	100% Polyester	Warp Is Filament	Yes
Warp Is Not High Tenacity	Yes	Warp Is Textured	Yes
Warp Sizes	300D/96	Warp Textured	Yes
Warp Threads per cm	15.94	Warp TPM	0

**Yarn 2**

Weft Composition	100% Polyester	Weft Is Filament	Yes
Weft Is Not High Tenacity	Yes	Weft Is Textured	Yes
Weft Sizes	300	Weft Textured	Yes
Weft Threads per cm	15.94	Weft TPM	0

**Yarn 3**

Warp Composition	100% Polyester	Warp Is Filament	Yes
Warp Is Not High Tenacity	Yes	Warp Is Textured	Yes
Warp Sizes	300D/96	Warp Textured	Yes
Warp Threads per cm	15.94	Warp TPM	0

**Yarn 4**

Pile Composition	100% Viscose	Pile Is Filament	Yes
Pile Is Not High Tenacity	Yes	Pile Is Staple	Yes
Pile Sizes	2/24S	Pile Threads per cm	10.39
Pile TPM	0		

**Yarn 5**

Pile Composition	100% Viscose	Pile Is Filament	Yes
Pile Is Not High Tenacity	Yes	Pile Is Staple	Yes
Pile Sizes	2/24S	Pile Threads per cm	10.39
Pile TPM	0		

Design: JURADO

**DOWNLOADS / CERTIFICATES**

There are no technical details for this section.