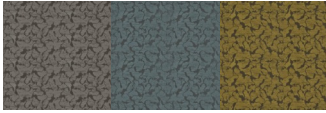


Design: ROBILLON



BASIC INFORMATION

Brand	Bru	Number of colour ways	3
Tariff item number	5801370000	MID	TRTEKTEK4I
Country of origin	Turkey	Characteristics	Velvet
Vertical repeat cm	41.00	Vertical repeat inch	16.14
Horizontal repeat cm	35.50	Horizontal repeat inch	13.98
Face in	Yes	Full roll diameter cm	33.5
Full roll diameter inch	13.19	Average piece length m	35
Minimum for special colour m	1000	Delivery time weeks special lab dip	2

CARE AND USAGE

Care code comments

iron on reverse side

Care codes



Care code for bleaching

Do not bleach

Use codes

Curtains ✓
Upholstery ✓
Accessories ✓

Curtains and draperies ✓
Bed covering ✓
Maritime

Design: ROBILLON

FABRIC SPECIFICATIONS

Composition	100% Polyester	Average yarn number	19.82
Construction	64x45	Woven	Yes
Useable width cm	1.42	Useable width inch	55.91
Full width cm	144	Full width inch	56.69
Weight g/m ²	550	Thickness mm	0.000
Colouring type	Piece dyed	Filament or staple	48% filament, 52% staple
Textured or non textured	100% textured		

Treatment

Bio treatment	Flame retardant
Soil and stain repellent	Brushed/emersed
Backing	Anti-bacterial/microbial
Mildew resistant	Odour resistant
Stain-free technology	PFC free
Other treatment	No treatment ✓

Type of finish

Calender	Sanforized
Thermofixed ✓	Washed
Airo	Stenter

Type of print or dye

Disperse ✓	Reactive
Vat	Pigment

Weaving type

Plain	Twill
Satin	Dobby
Jacquard ✓	Pile
Other	

Design: ROBILLON

FABRIC TYPE

There are no technical details for this section.

ENVIRONMENTAL STANDARDS



Prop 65

Yes

FR STANDARDS

BS5867 part 2 type B
CAL 117 Complies
NFPA 260

No
Yes
Yes

BS5852 source 0
FMVSS 302 Pass
NFPA 701

Yes
Yes
Yes

Design: ROBILLON

MECHANICAL PERFORMANCE

Martindale rubs	40,000	Colour fastness to light	6
Wyzenbeek double rubs	200,000	Pilling	4-5
Brush pilling	4-5	Wyzenbeek wire screen double rubs - residential use, stopped after 15 000 double rubs	15,000
Wyzenbeek cotton duck type heavy upholstery	Yes	Wyzenbeek wire screen heavy duty	Yes
Colour fastness to light - ISO 105-B02			
Colour fastness to light	6		
Colour fastness to water - ISO 105-E01			
Colour fastness to water	5		
Colour fastness to dry rub - ISO 105-X12			
Colour fastness dry rub	4-5		
Colour fastness to wet rub - ISO 105-X12			
Colour fastness wet rub	4-5		
Colour fastness to wear - ISO 12947-2			
Colour fastness to wear	4		
Tearing strength - ISO 13937-3			
Tearing strength warp N	47	Tearing strength weft N	110
Tensile strength - ISO 13934-1			
Tensile strength warp N/5cm	1500	Tensile strength weft N/5cm	1700
Elongation - ISO 13934-1			
Elongation warp %	19.50	Elongation weft %	21
Seam slippage - ISO 13936-2			
Seam slippage warp mm	3	Seam slippage weft mm	3
Dimensional stability (indicated in %) - ISO 3759			
Dimensional change warp	0.07	Dimensional change warp after ironing with steam	-0.27
Dimensional change warp after ironing without steam	0.00	Dimensional change weft	0.08
Dimensional change weft after ironing with steam	0.13	Dimensional change weft after ironing without steam	0.13

Design: ROBILLON

WASHABILITY

Resistance to domestic washing 30° C, indicated in % - ISO 6330

Dimensional change warp	-0.26	Dimensional change warp after ironing	-0.26
Dimensional change weft	-0.07	Dimensional change weft after ironing	-0.07
Colour fastness ISO 105 C06	5		

Resistance to domestic washing 60° C, indicated in % - ISO 6330

Dimensional change warp	-0.73	Dimensional change warp after ironing	-0.60
Dimensional change weft	0.00	Dimensional change weft after ironing	-0.07
Colour fastness ISO 105 C06	5		

Resistance to dry cleaning P, indicated in % - ISO 105 D01

Dimensional change warp	-0.23	Dimensional change warp after ironing	0.07
Dimensional change weft	-0.13	Dimensional change weft after ironing	0.07
Colour fastness ISO 105 D01	5		

Design: ROBILLON

CONSTRUCTION

Yarn 1

Warp Composition	100% Polyester	Warp Is Filament	Yes
Warp Is Not High Tenacity	Yes	Warp Is Textured	Yes
Warp Sizes	300 DNY	Warp Textured	Yes
Warp Threads per cm	42	Warp TPM	0

Yarn 2

Warp Composition	100% Polyester	Warp Is Not High Tenacity	Yes
Warp Is Staple	Yes	Warp Is Textured	Yes
Warp Sizes	NE20/2	Warp Textured	Yes
Warp Threads per cm	22	Warp TPM	0

Yarn 3

Weft Composition	100% Polyester	Weft Is Filament	Yes
Weft Is Not High Tenacity	Yes	Weft Is Textured	Yes
Weft Sizes	300 DNY	Weft Textured	Yes
Weft Threads per cm	22	Weft TPM	0

Yarn 4

Weft Composition	100% Polyester	Weft Is Not High Tenacity	Yes
Weft Is Staple	Yes	Weft Is Textured	Yes
Weft Sizes	NE20/2	Weft Textured	Yes
Weft Threads per cm	23	Weft TPM	0

DOWNLOADS / CERTIFICATES

There are no technical details for this section.